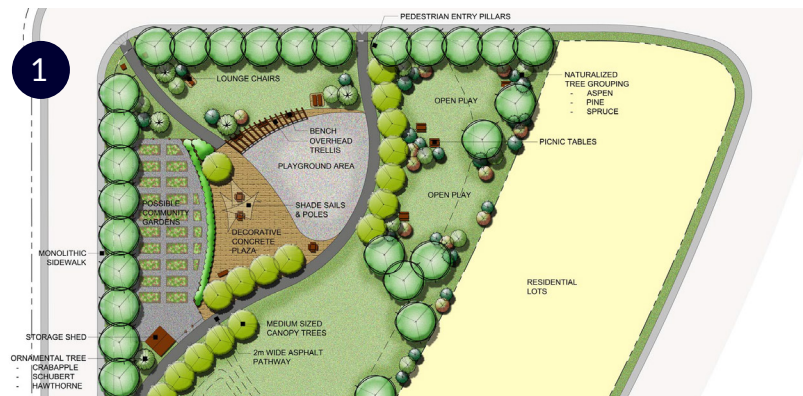




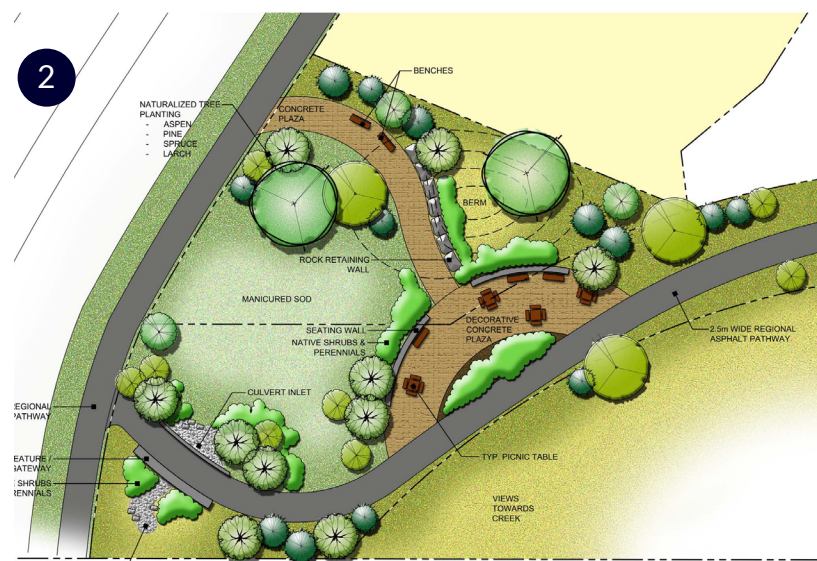
# COBBLESTONE CREEK

## QUIET CREEKSIDE LIVING

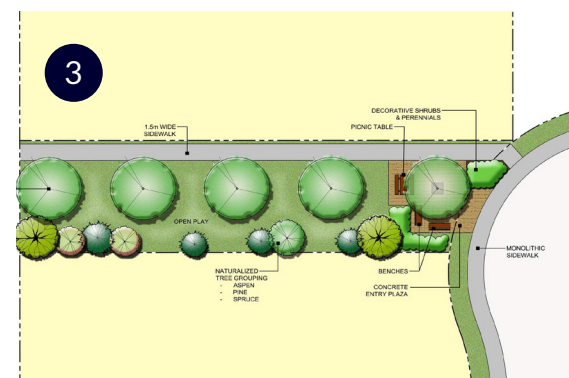
### PARKS MASTER PLAN



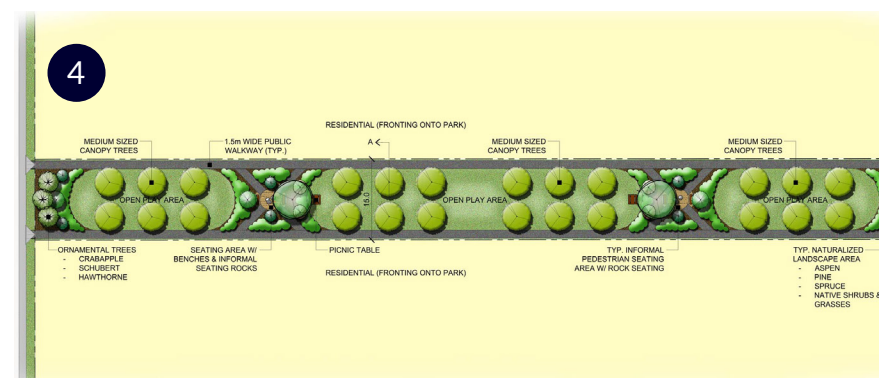
1. Families can gather at the picnic spaces while children play in the open spaces. Residents tend to the community garden, and grow vegetables while feeling more closely connected to nature.



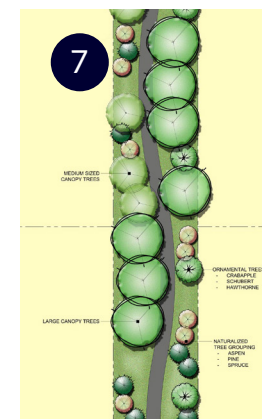
2. Scenic outdoor plazas offer a variety of seating spaces. Ample greenspace in the area attracts squirrels, birds, and butterflies to the parks making the community feel vibrant and serene.



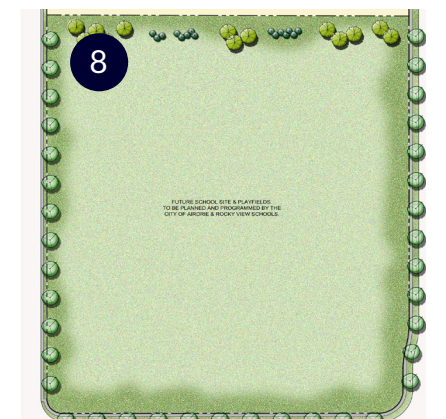
3. Multiple greenspace corridors offer convenient spaces where friends can easily meet for coffee and good conversation.



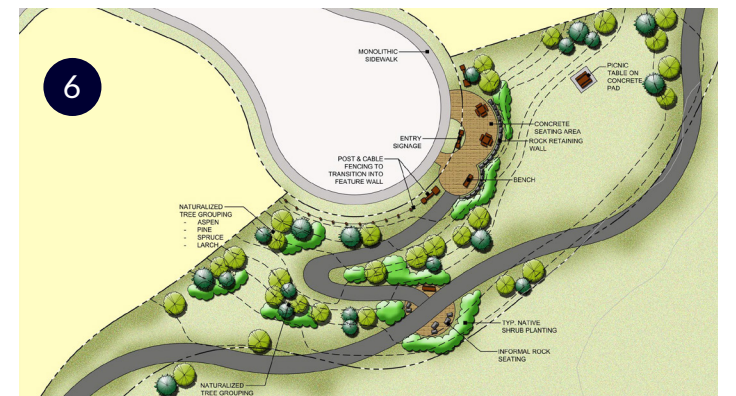
4. Ample green space makes it easy for residents to spend time outdoors. Under a canopy of trees, it's easy to get outside and spend time peacefully walking through the multiple neighbourhood parks.



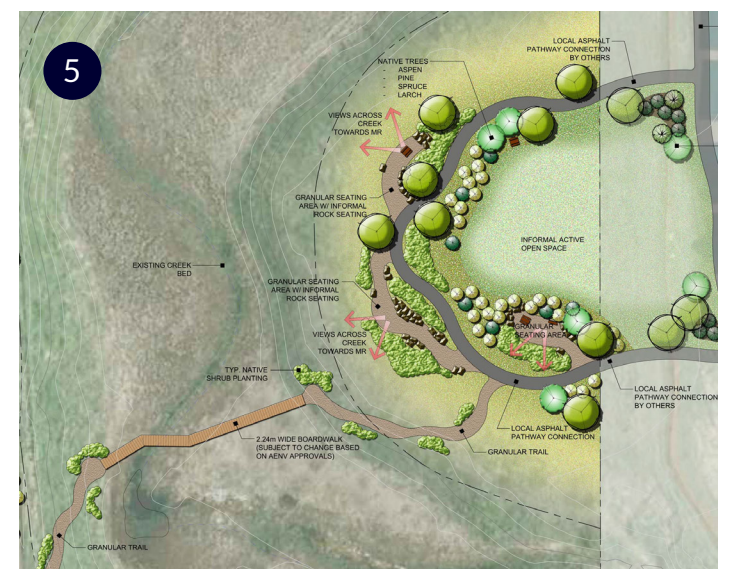
7. Enjoy an evening run on over 2 km of community pathways that connect to greater regional pathway systems.



8. A future nine-acre school site, this space is planned to potentially offer an ice skating rink, tennis court, pickle ball courts, soccer pitches and a basketball court.



6. Take a morning stroll over to the naturalized park site. Interactive signs describe both the native plants, and the environmental reserve and creek that the boardwalk spans.



5. Follow the boardwalk over the creek and environmental reserve. These pathways connect to the regional pathway system with many kilometers to explore.



