

# ◆ the cayden

a magazine-worthy duplex home

3 Bed | 2.5 Bath | 1444 sq ft



Making a seamless transition from house to home is easy with the Cayden. The flowing main floor features a spacious living, dining and kitchen layout, ideal for entertaining or cozy nights in. Featuring three bedrooms, second floor laundry and attached garage, you can truly make this designer duplex your new home. And with globally-inspired Designer Interiors™ to choose from, you won't have to sacrifice your lifestyle to afford the home you love.

## Main Floor Features

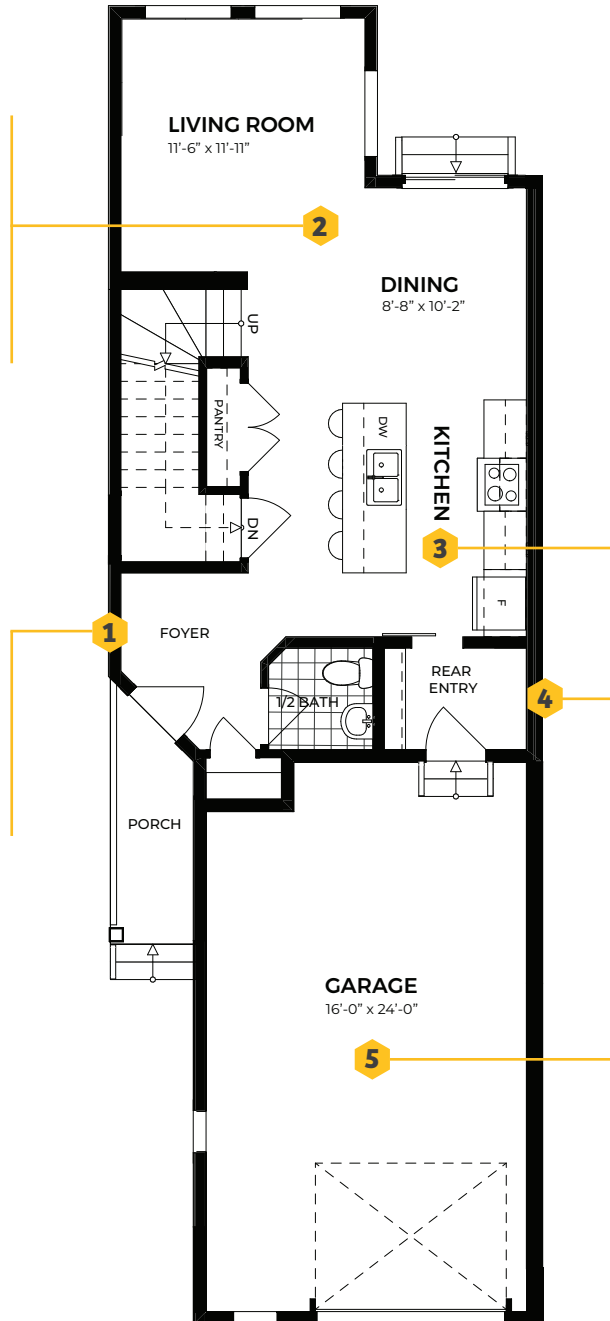
9' ceilings, 653 sq ft



**2** An **open main floor** makes hosting a breeze with a living area that has been purposefully built to blend seamlessly into the kitchen and dining room.



**1** Extra **foyer space** allows your family and guests to comfortably take off coats and boots.



**3** The kitchen is designed for maximum efficiency. Using the **kitchen work triangle rule**, movement between the fridge, stove and sink is minimized.



**4** The large **rear entry** has plenty of space for bringing in the groceries or for kids with all their gear.



**5** Your **attached oversized single car garage** is designed with space for your vehicle with extra room to store your toys and tools.

Artist's renderings are conceptual only and are subject to change without notice. Dimensions are approximate and may vary in actual building. No guarantee is made that the facilities or features shown will be built, or if built, will be of the same type, size, or nature depicted as seen in the showhome or on this material. Windows are subject to change with elevation. As of September 22, 2021.

• **this home has been purposefully designed to help you feel better about where you live**

RohitCommunities.com



• your designer homebuilder

## Upper Floor Features

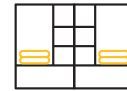
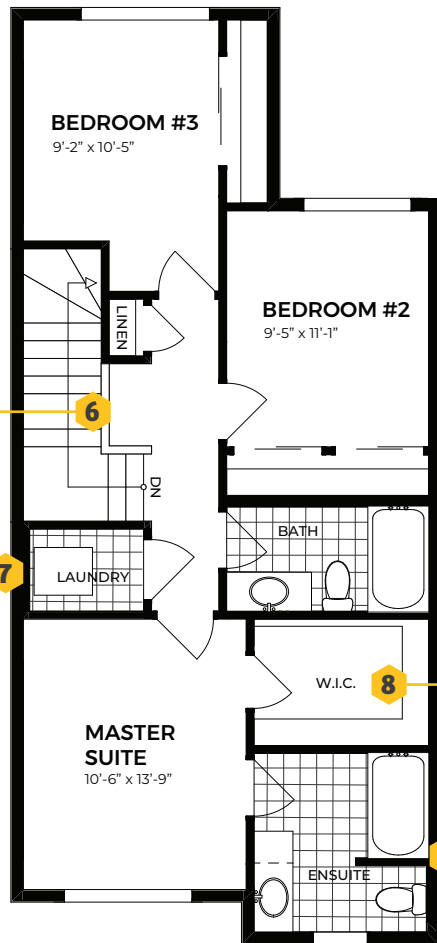
791 sq ft



**6** This **niche** is ideal for a homework or work space as it offers privacy and separation from all the action on the main floor.



**7** **Upstairs laundry** is purposefully located in a central space for easier access. Say goodbye to awkwardly carrying a laundry basket down the stairs.



**8** Be the master of clothing storage with this spacious **walk-in closet** - designed at double the size so there's space for everything you need.



**9** Relax in your **master ensuite** at the end of a long day. Designed with a bright window situated sensibly for the space.

Artist's renderings are conceptual only and are subject to change without notice. Dimensions are approximate and may vary in actual building. No guarantee is made that the facilities or features shown will be built, or if built, will be of the same type, size, or nature depicted as seen in the showhome or on this material. Windows are subject to change with elevation. As of September 22, 2021.

• **this home has been purposefully designed to help you feel better about where you live**

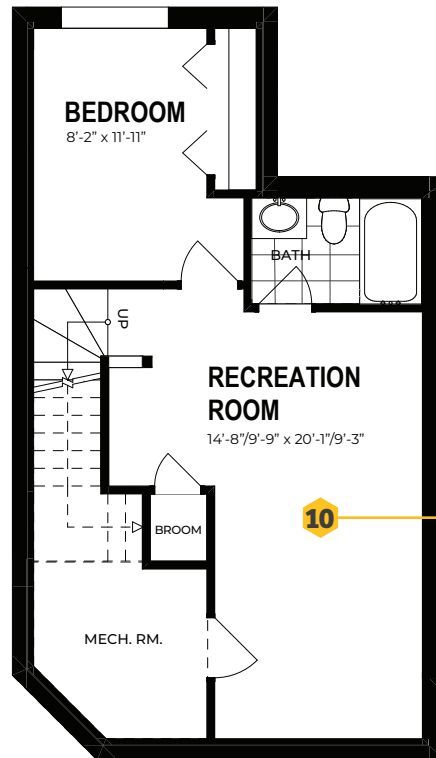
RohitCommunities.com



• your designer homebuilder

## Optional Basement Development Plan

518 sq ft



**10** Add even more living space with an **optional developed basement**. Turn the rec room into a large media room or games room - a space for the whole family to enjoy.

## Why Rohit?

### Our difference is in the designer details

Every element of our **Designer Interiors** has been added for a reason. From the light fixtures down to the hinges, everything in a Rohit Communities home works together so our customers can live in a space that looks amazing and makes everyday life easier through functional design. With over 30 years of experience building award-winning homes, we're pleased to offer designer homes that help everyone feel better about where they live.

Artist's renderings are conceptual only and are subject to change without notice. Dimensions are approximate and may vary in actual building. No guarantee is made that the facilities or features shown will be built, or if built, will be of the same type, size, or nature depicted as seen in the showhome or on this material. Windows are subject to change with elevation. As of September 22, 2021

• **this home has been purposefully designed to help you feel better about where you live**

RohitCommunities.com



• **your designer homebuilder**